



reTHINK RESOURCE

Helping you rethink waste.

The problem... landfills.

11% of global GHG emissions¹

Capacities exhausted by 2036^{2,3}

Rising waste disposal costs⁴

Ontario landfill waste = 11.5M tonnes^{5*}

Canada landfill waste = 28.6M tonnes^{6*}

*2024 estimates based on pro-rated data by population.



The solution

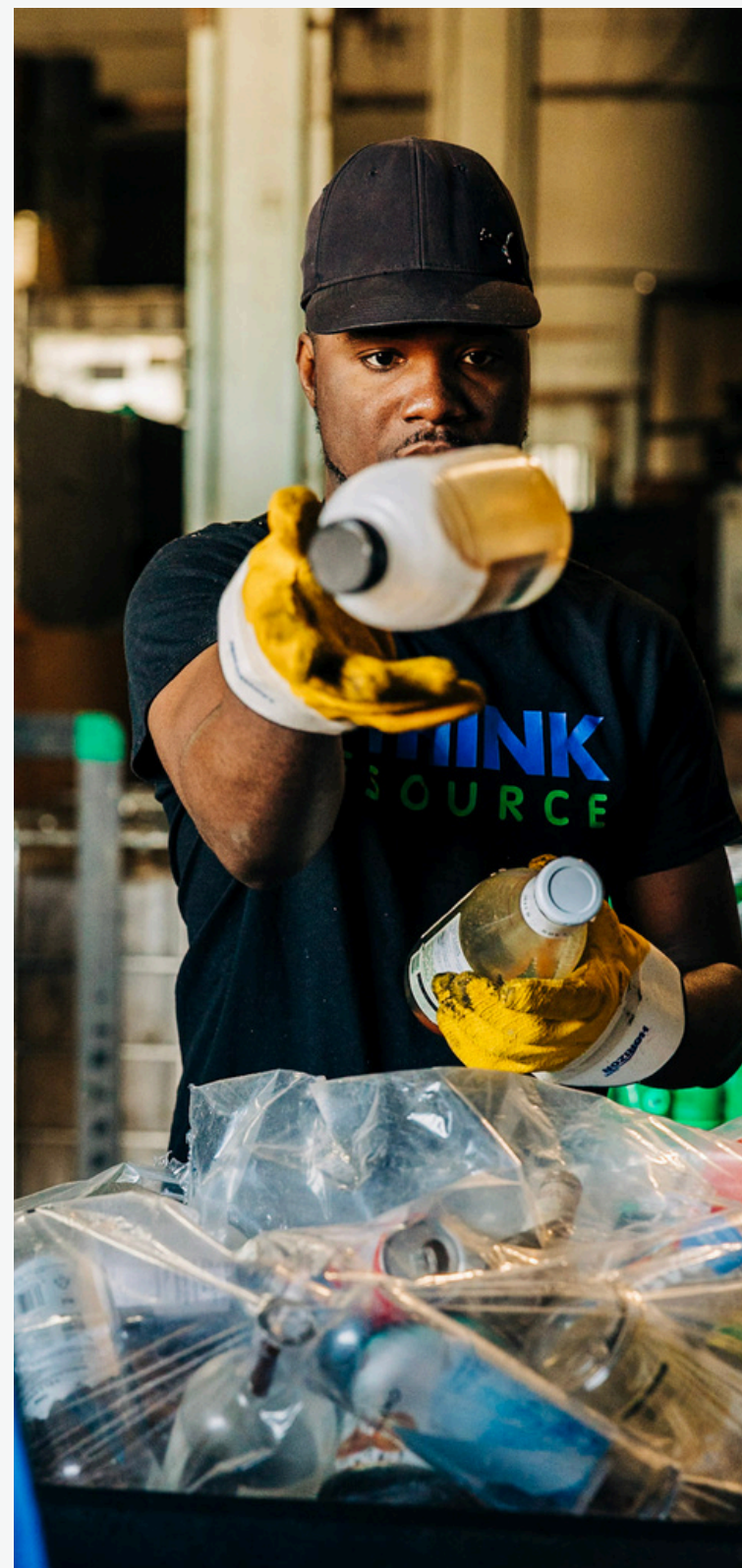
ZERO landfills

ZERO emissions

SAVING costs



Helping you rethink waste.

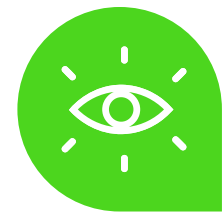


We're not your average waste management provider.

We're North America's most sustainable waste diversion provider.



Helping you rethink waste.



Our vision

Create a landfill-free world.



Our mission

To divert all waste from landfill using the least carbon-intensive and most climate-positive methods.

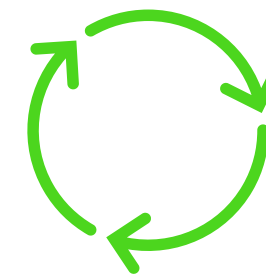




What makes us different



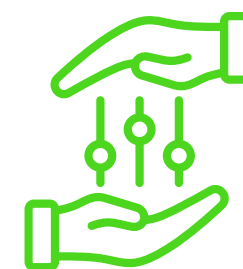
All-in-one



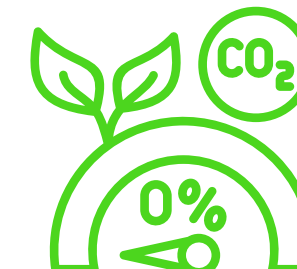
Circularity



Data-driven



Hyper-Customized



Net-zero emissions

What we do & how we do it



Upcycling & recycling

Recyclable materials are upcycled or recycled into new materials & products.



Hard-to-recycle plastics

Certified destruction

Cardboard & paper

Glass & metals

Pallets

E-waste



Compost & bioenergy

Food waste is fed to livestock, composted, or turned into biogas.



Organics

Grease trap

Oil collection

Fat rendering

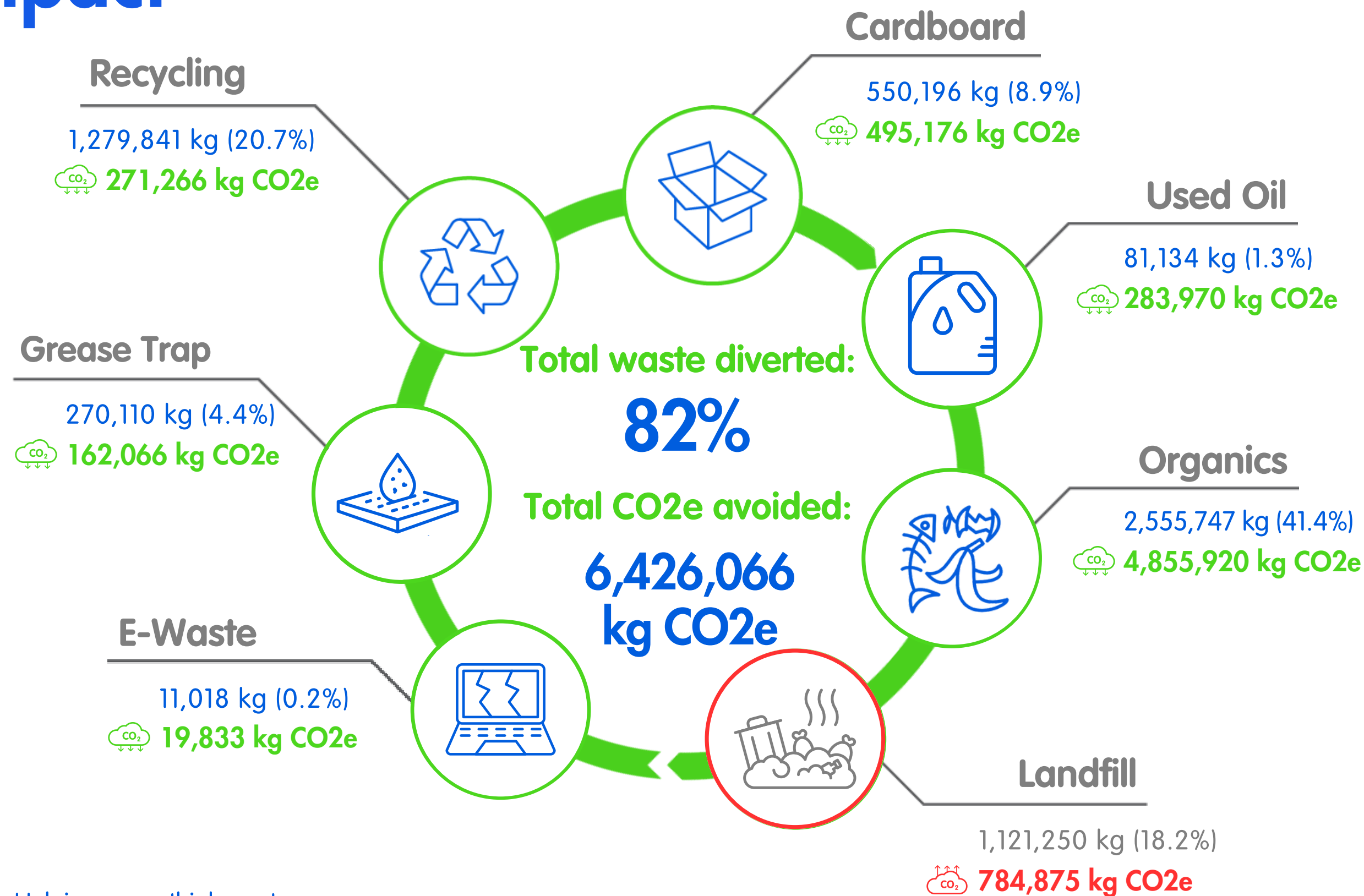


Waste & emissions reporting

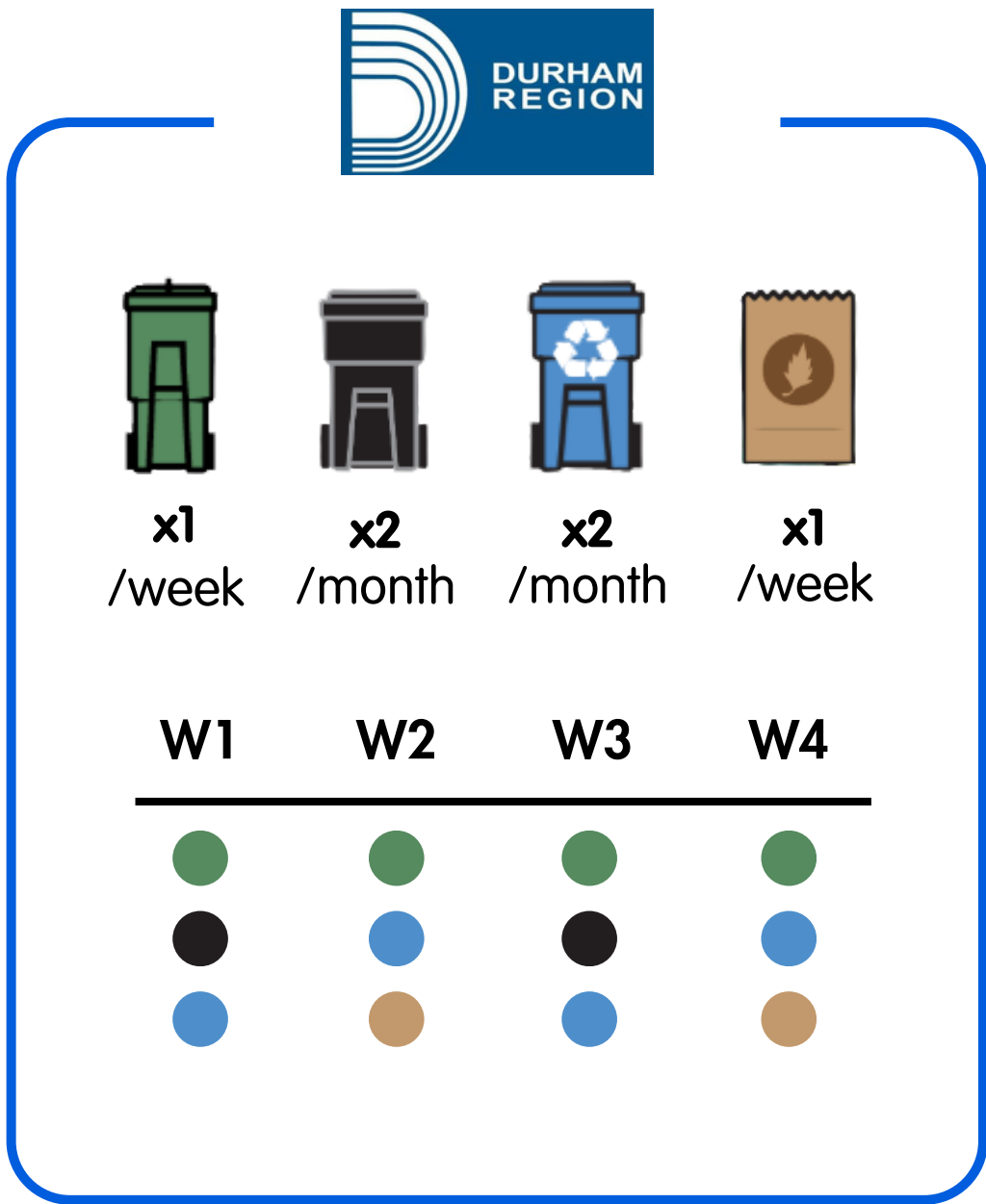
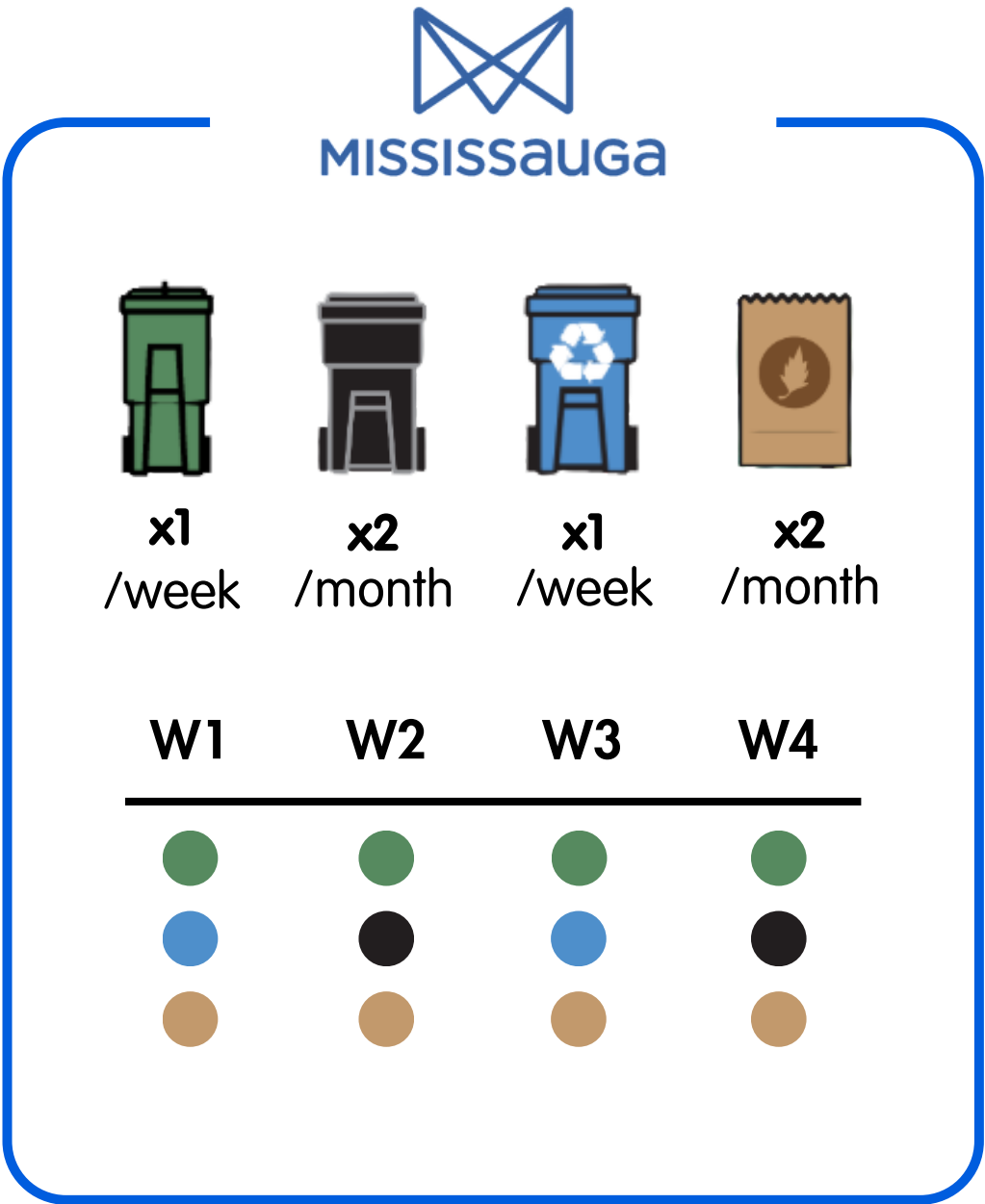
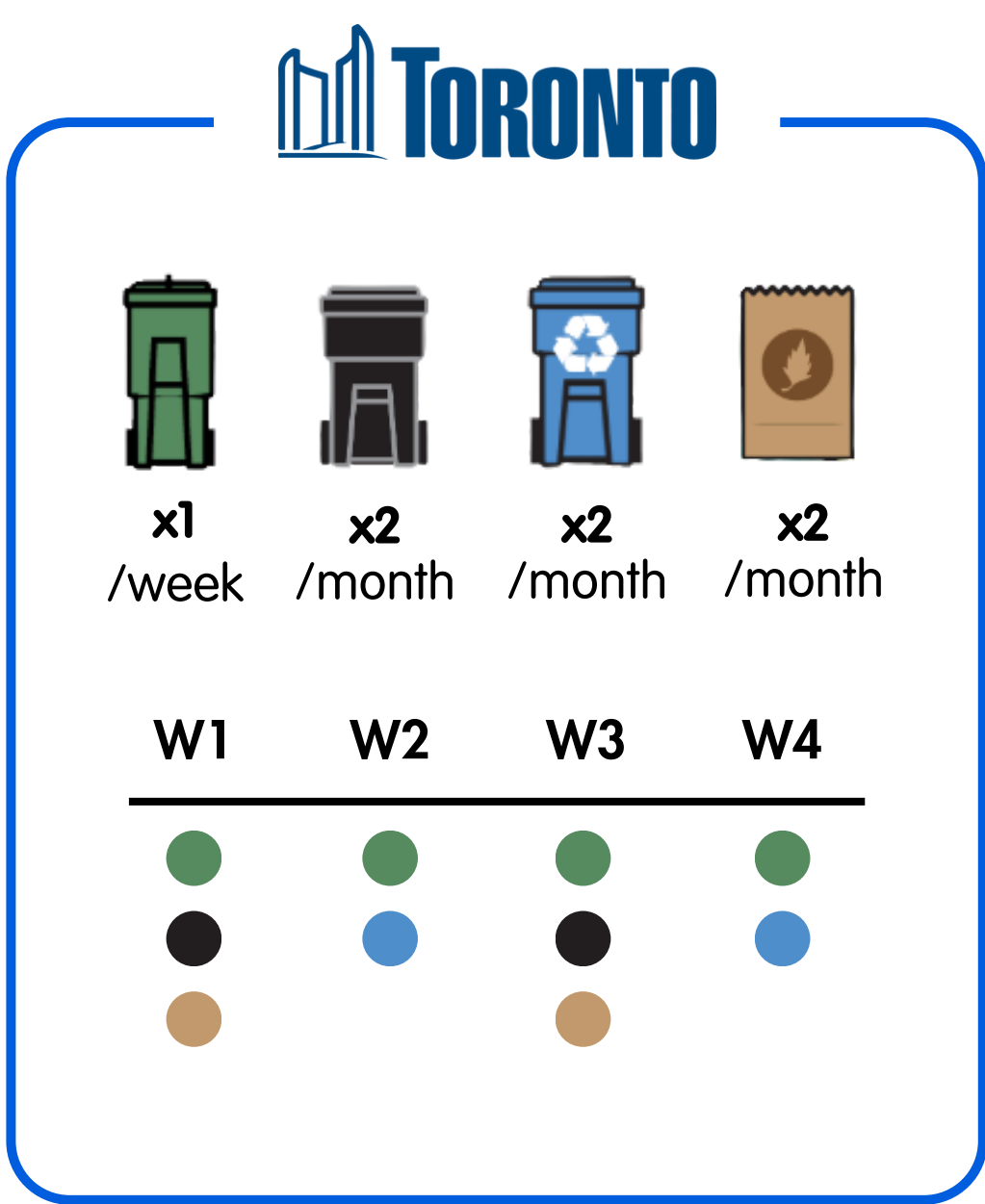
Waste audits

Carbon accounting

Our impact

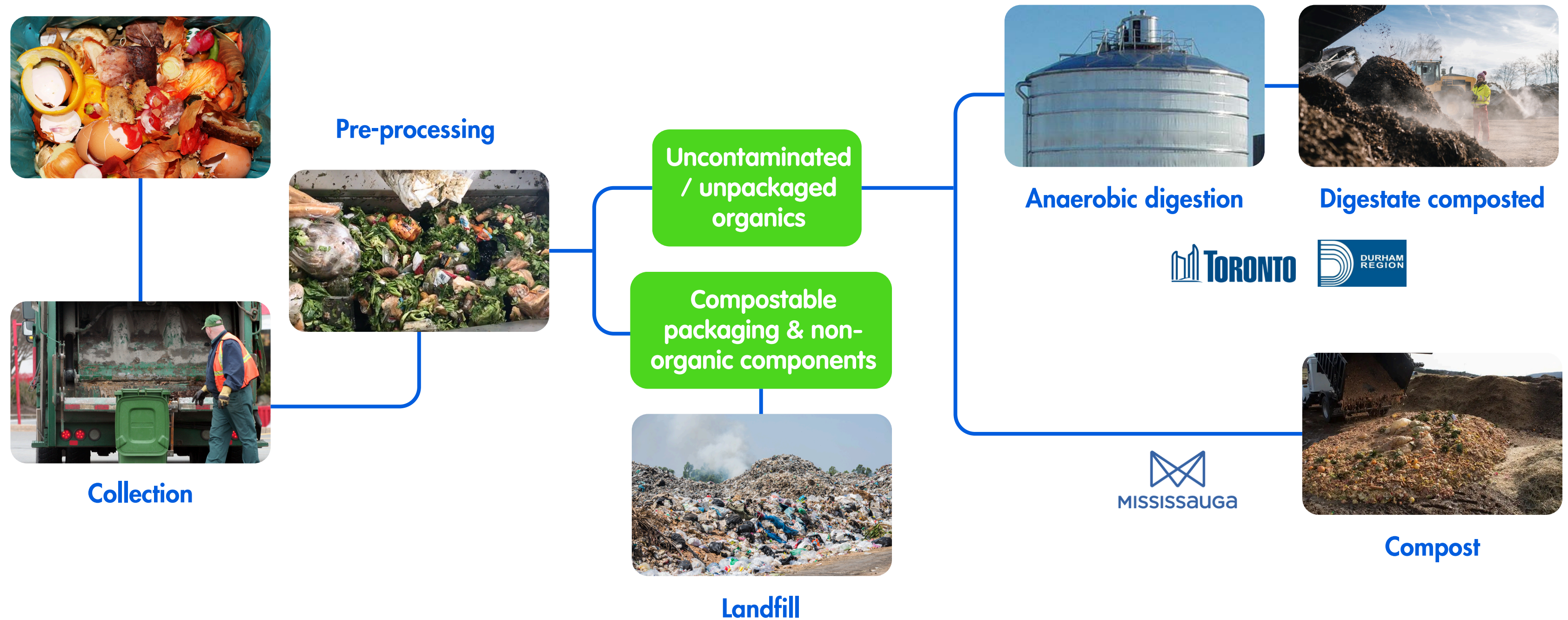


Municipal approaches to food waste collection

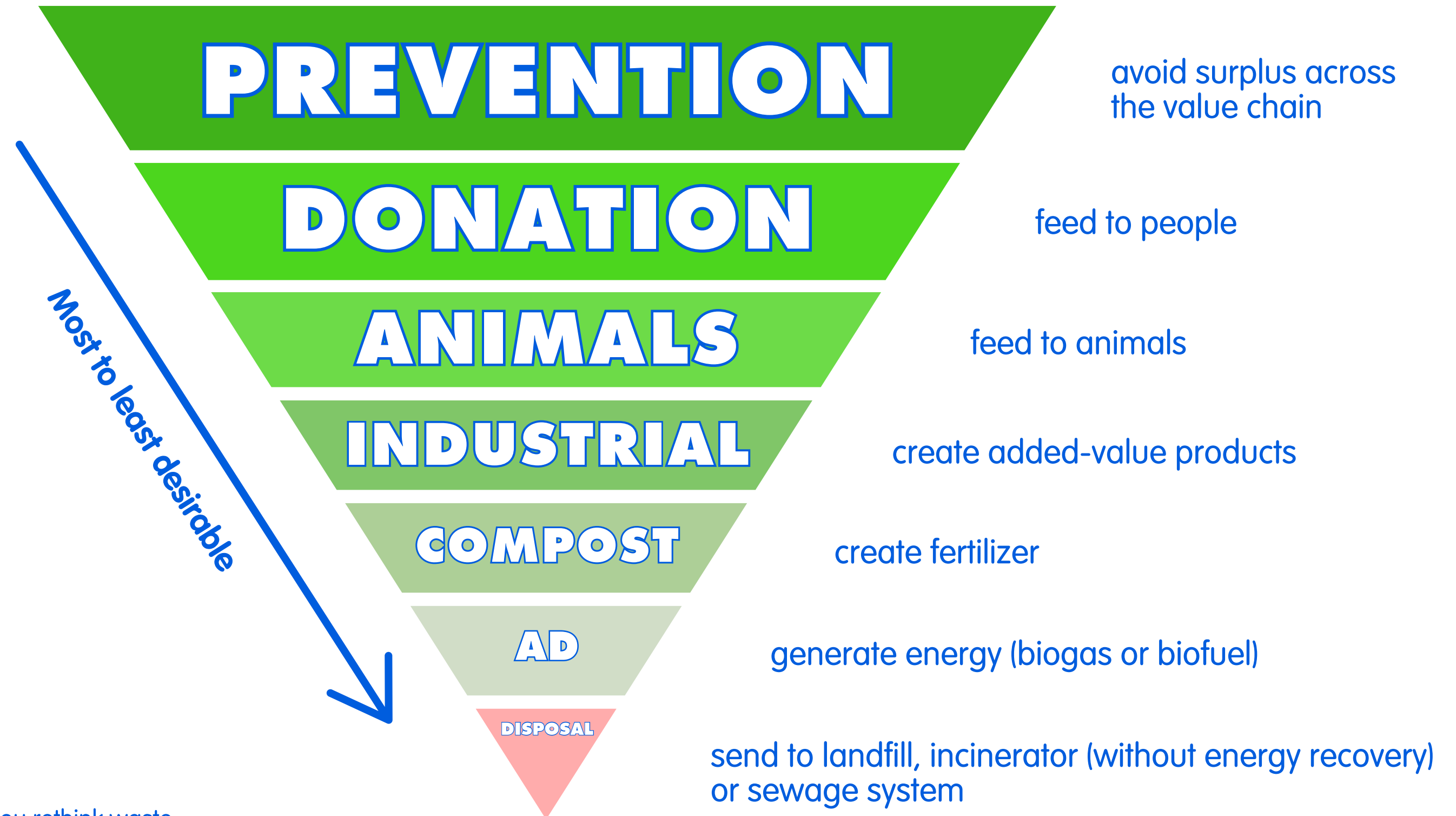


The most successful food waste collection programs are weekly.

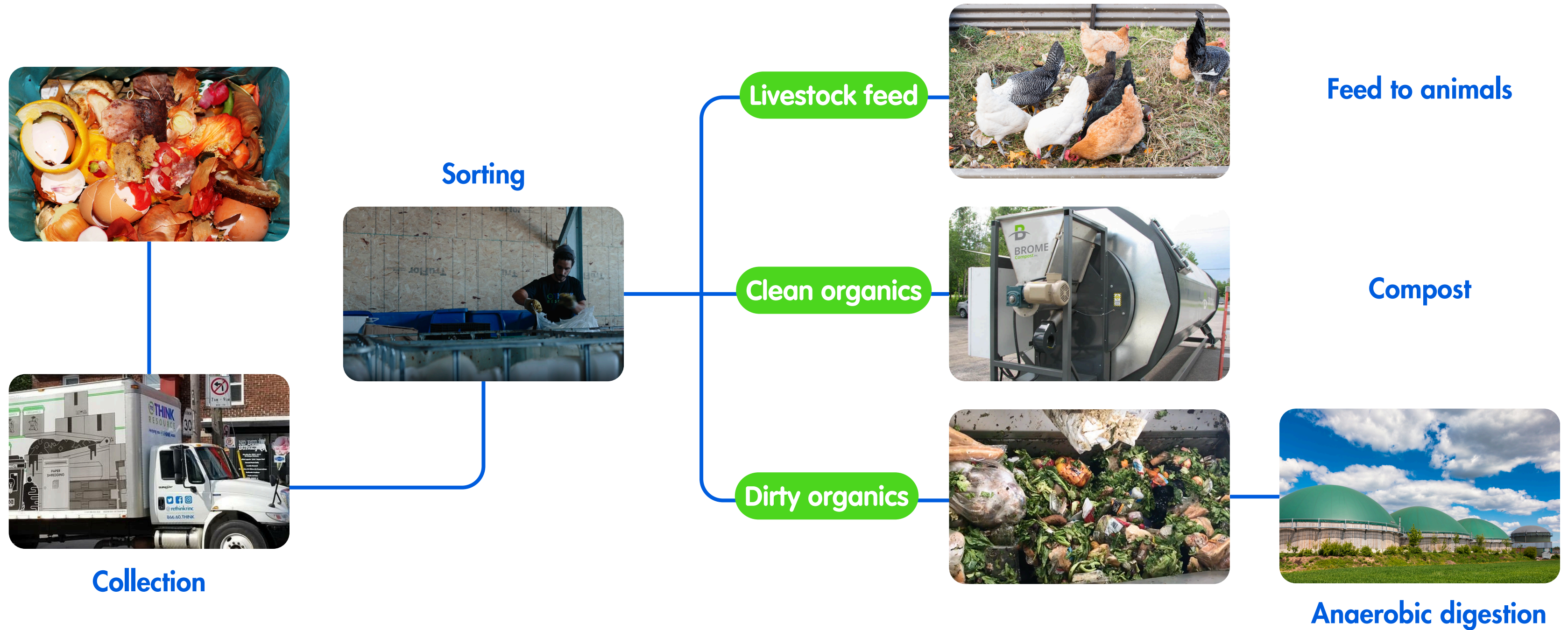
Municipal approaches to food waste management



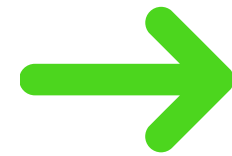
The food waste hierarchy



Our approach to food waste diversion



Compostable packaging model



All food providers are mandated to use **certified compostable packaging**

Organics and compostable packaging are actually composted

Maximized **landfill diversion** and increased **carbon sequestration**

Compostable packaging model: Case study



CITY CODE CHAPTER 14, ARTICLE 3

As of April 2019 the City of Monterey in California adopted a new **disposable food service ware ordinance** that mandates:

- All disposable food service ware is required to be ASTM-certified compostable* or currently recyclable.*
- Plastic straws, utensils, and stirrers are prohibited.
- Dine-in services must provide reusable food service ware.

*"Food provider" includes any vendor located or providing food within the City, which provides prepared food on or off its premises and includes without limitation any store, shop, sales outlet, restaurant, grocery store, supermarket, delicatessen, food/catering truck or vehicle, and vendors located outside of the City delivering prepared food into the City.

*"Compostable" means all the materials in the product will break down, or otherwise become a part of usable compost in a safe and timely manner. Compostable disposable food service ware must meet ASTM standards for compostability.

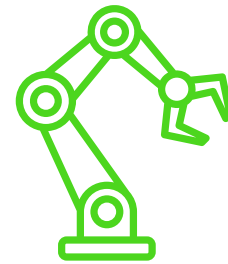
*"Recyclable" means any material that is accepted by the City or special district recycling program.



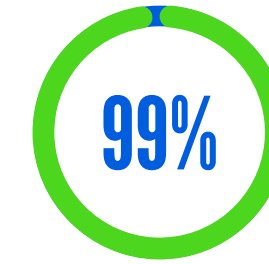
Innovations in the pipeline

✓ QSR compostable model

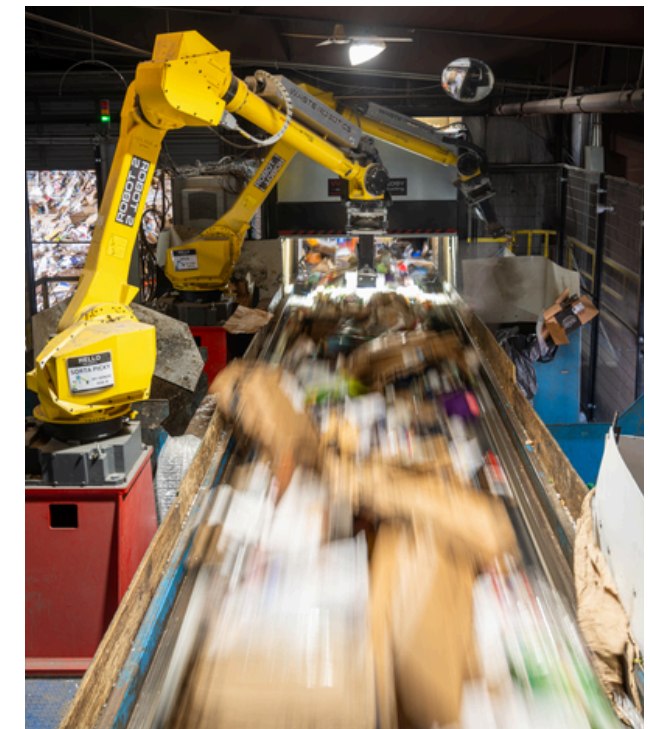
✓ AI robotic sorting tech



Use AI robots to pick recyclables out of mostly compostable packaging

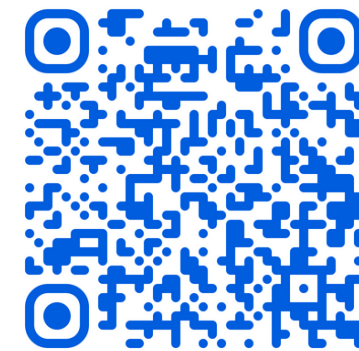


Diversion from landfill





Join us in **rethinking**
food waste.



reTHINK
RESOURCE